

# Walk-In Baths

with

PennAire

MICROBUBBLE TECHNOLOGY



**PENNER**  
BATHING

Bathing Solutions for Every Need®

*DREAM SPA* & TheraSpa  
Walk-In Baths



THE *DREAM SPA* & TheraSpa

Like no other walk-in baths in the world. Designed and manufactured by Penner Bathing. A leader in long-term care bathing systems for 40 years, we are now offering our state-of-the-art technology for your home.

Factory-Direct Shipping and Production Efficiency make these baths the most affordable walk-in baths on the market.

CONTENTS

*	6	PENNAIRE MICROBUBBLES
*	9	AFFORDABILITY
*	10-11	CUSTOMER TESTIMONIALS
*	14-17	DREAM SPA FEATURES/QUICK FACTS
*	18-21	DREAM SPA COLORS & FINISHES
*	22-23	DREAM SPA MEASUREMENTS & ROUGH-INS
*	26-29	THERASPA FEATURES/QUICK FACTS
*	30-31	THERASPA MEASUREMENTS & ROUGH-INS
*	32-33	COMPARING DREAM SPA & THERASPA





# NOT JUST YOUR GRANDMOTHER'S BATH TUB

## WALK-IN BATHS ARE FOR EVERYONE

The young and the young-at-heart enjoy the relaxing, therapeutic benefits of our walk-in baths. Massaging jets treat aching muscles due to chronic arthritis. Get relief from everyday tension and muscle strain from your hectic lifestyle.

Our baths are designed to accommodate most anyone from a small-framed person to a 6'10", 270 lb. basketball player (as evidenced by this snapshot in our booth at a recent home show). Athletes, avid gardeners, new moms, farmers, stressed-out teens...EVERYONE will love how they feel when they use them.



6'10" David  
is a great fit!



for the do-gooder



for the hard worker



for the athlete





INTRODUCING

PennAire

ADVANCED MICROBUBBLE TECHNOLOGY  
FOR YOUR SKIN



# PennAire

## 3 BENEFITS OF OUR MICROBUBBLES

1. Microbubbles penetrate the skin pores using a negative charge, attracting dirt, debris and dead skin cells.
2. Microbubbles surround the body in a cloud of oxygen leaving the skin feeling very soft and pliable. See photo on left. You can see the microbubble cloud in the bath water.
3. Heat energy from the microbubbles helps maintain the water temperature during the bath.



# DREAM BIG. PAY LESS.

## Crushing the Competition on Price

### WHY ARE OUR WALK-IN BATHS SO AFFORDABLE?

The competition wants to sell you expensive remodeling packages and cheaply designed baths. Not so with Penner. We've been making baths for medical facilities for more than 40 years. We care about quality and durability.

Dream Spas fit into standard tub area making installation simple and less costly. See actual bid for walk-in tub installation from another company.



Retail Price	\$33,190.69
Senior Citizen Discount	\$1,659.53
Monthly Promotion	\$6,638.00
PROJECT SPECS	
Bath Additional Labor - Build Wall to Ceiling Acrylic or Drywall	
Bath - Additional Labor - Build Wall to Ceiling Acrylic or Drywall	
Qty: 1 Each	
Kohler Shower Wall-Kits 60 x 36 x 96 -Solid kit(1) 60x36x96 (2) 36x96	
Qty: 1 Each	
DEPOSIT	\$33,190.69
TOTAL SAVINGS	\$8,297.53
BALANCE	\$24,893.16
ESTIMATED MONTHLY PAYMENT:	\$0.00

**SHOP AND COMPARE** It's difficult to find a more affordable walk-in bath. The combination of experience, standard, up-front pricing and factory-direct shipping makes our DREAM SPA & TheraSpa thousands less than most of our competitors.

## 3 Reasons We Keep the Price Down

01

### FACTORY-DIRECT

No middleman. We manufacture all our walk-in baths right in our manufacturing plant and ship directly to you saving you thousands of dollars.

Many of our manufacturing employees have been with our company for more than 10 years. They are trained directly by our chief engineers making our build process streamlined, efficient and timely.

02

### EXPERIENCE MATTERS

Bathing. It's what we do. Penner Bathing and Penner Manufacturing have been a leader in the bathing spa industry with more than 300 years of combined experience in the design and manufacture of bathing systems. Our chief engineers and designers have been with us since the beginning.

We offer fair, up-front pricing, knowing the frustration with hidden fees and inconsistent pricing.

You may choose your own trusted, local contractor to install. We also offer installation in the midwest area. Contact us for a free quote. We offer LIVE phone support for your convenience.

03

### QUALITY CONTROL

Our production facility is next door to our main office, not overseas thousands of miles away. Our chief architects and engineers are on campus overseeing the production process, saving time and money.

You may often speak directly to one of our designing engineers when you call our main office. You also have the benefit of a LIVE person answering your call and giving you the information you need.





# OUR CUSTOMERS SAY IT ALL

WE ARE A FAMILY COMPANY WITH STRONG FAMILY VALUES.  
WE ARE GRATEFUL FOR OUR NEW CUSTOMERS AS WELL AS THOSE WHO  
HAVE BEEN WITH US FOR MANY YEARS.

**“OUR FACILITY HAS BEEN DOING  
BUSINESS WITH PENNER BATHING  
FOR OVER 20 YEARS. THEIR SERVICE  
ON THEIR EQUIPMENT IS EXCELLENT.  
THEY WANT TO MAKE SURE YOU ARE  
SATISFIED WITH THEIR PRODUCTS.”**

**-Kathy, Administrator, Central City Care, NE**

We have fantastic Sales Representatives throughout the United States & Canada.  
They are ready to serve you! Call us to locate one in your area.

**(800) 732-0717**



**“The Dream Spa is the greatest part of our new bathroom remodel!”**  
**-Vicki, Dream Spa Customer. Central NE. Private residence.**



*spa shown in reclaimed wood finish*



## THIS IS WHY WE DO WHAT WE DO



**“Betsy and I want to thank you much for the great service you gave the two of us by giving detailed answers to all our many requests as to our new Dream Spa. This happened from the original day I called you until Thursday, September 12, 2019 when you lifted the Dream Spa upstairs to our bathroom. May God bless your company and you for the Great Service!!!**

**Betsy is enjoying the Dream Spa VERY MUCH! It is helping very much her back and body!**

**We are very glad that PENNER PATIENT CARE, INC. (Penner Bathing) decided to build a spa for homes. There are many, many homes that need one. There are many people who have daily back problems. May God bless your efforts and success. I now call my wife The Dream Spa Queen!”**

**-Peter, Dream Spa Customer. NW Iowa. Private residence.**



**“We really appreciated the fact that we knew the price upfront. It has been a Godsend. Larry fell in the tub three times before and we’re now able to bathe safely, avoid home health as long as possible and I can just take care of him at home and Penner’s made it possible.”**

**-Larry and Janice, Dream Spa Customer. Central NE. Private residence.**



# *DREAM SPA*

## WALK-IN BATH





# DREAM SPA FEATURES

AND HOW YOU BENEFIT

## PENNAIRE MICROBUBBLES

PennAire

Experience PennAire Microbubble Technology.  
This relaxing process rids the skin pores of debris and dirt, leaving skin fresh & hydrated.

## WATERFALL FAUCET MODERN FEATURES



Every Dream Spa comes with modern features like this beautiful and relaxing waterfall faucet. It's efficient too!



### WIDE DOOR

LOTS OF ROOM TO ENTER SPA

A wide, swing-out spa door makes entering and exiting a breeze. Interior safety handles inside the door and on the opposite side of the spa provide extra stability.



### SHOWER WAND

SHAMPOO HAIR WITH EASE

The convenient hand-held shower wand gives you directional control of a gentle spray for washing hair and body or rinsing down the interior of the spa between uses.



### HEATED SEAT & AIR

STAY WARM DURING FILLING

Enjoy the warmth and relaxation of our heated seat, back and circulating air while the spa fills with water. You control the level of warmth with our simple touch pad.



### SAFE ENTRY

NO STEP-IN REQUIRED

Customer safety and comfort are always a high priority when designing our spas. Enter by sitting and then gently swinging legs and feet into the spa. No danger of stepping in and slipping on a wet interior surface.



### STANDARD TUB SPACE

NO EXTENSIVE REMODEL NEEDED

The Dream Spa is designed to fit into a standard tub space. You won't need an extensive and costly remodel to install a new spa.



### UNLIMITED DESIGNS

MILLIONS OF OPTIONS

Choose ANY design or color! How about gorgeous marble, granite, a tile look, solid color or even your favorite beach scene. Standard white is always available too.

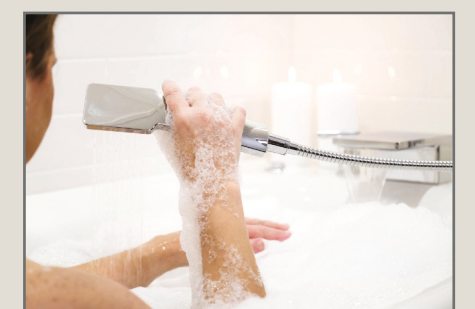
WATCH OUR SPAS IN ACTION &  
GET HELPFUL VIDEO TUTORIALS  
ON OUR DREAM SPA WEBPAGE!



scan with phone camera



ALL SPAS COME WITH A  
LIFETIME LIMITED WARRANTY  
FOR ADDED PEACE OF MIND



(800) 732-0717 pennerbathing.com | 15



DREAM SPA  
QUICK FACTS

BY CATEGORY

DIMENSIONS & MEASUREMENTS

Spa Dimensions (with Fascia - these are the outer panels)	59.25”L x 32.5”W x 40.25”H Minimum
Maximum Exterior Width	32.5”
Interior Width	21.5”
Seat Height from Floor of Spa	20.5”
Interior Length	35”
Drain Diameter (needed for install or in the tub)	1.5” to 2”
Supply Lines	3/4”
Minimum Width of Room Door Opening to Get Dream Spa through Door	29”
Average Gallons of Water Used per Bath for 170 lb Person	45 Gallons
Gallons of Water to Overflow without Person in Spa	70 Gallons

WEIGHTS

Weight of Dream Spa	235 lbs
Weight of Spa w/Shipping Crate	350 lbs
Weight of Spa w/45 Gallons of Water & 170 lb person	780 lbs

TIME ESTIMATES (SOME VARIATIONS)

Duration of Heating for Seat & Back Until Automatic Shut-Off	30 Minutes
Duration of Aqua-Aire™ Blower Until Automatic Shut-Off	20 Minutes
Average Delivery Time for White Dream Spa	2 Weeks
Average Delivery Time for All Color & Design Finishes (except White)	4-5 Weeks

OTHER INFORMATION

Electrical	120 Volts/10.5 Amps
Warranty Type	Lifetime Limited
Installation	Choose Your Local Contractor
Spa Color & Design Options	Millions
Dream Spa Aqua-Aire™ Blower	3-Speed Options
Water Spigot Style	Waterfall
Mixing Valve - Watts Brand Located Below Front Deck	ASSE 1070
Fill Valves - Artos Brand Individual Hot & Cold	3/4” Fitting

Have questions? Call to speak to LIVE representatives waiting to assist you. Monday-Friday, 8AM-4PM.  
(800) 732-0717



# YOU DREAM IT WE MAKE IT

MILLIONS OF COLOR & DESIGN FINISHES

## MILLIONS OF OPTIONS

The color and design of the Dream Spa is only limited by your imagination! Pick a traditional white or marble finish. Show your personality with a beach scene, a favorite purple color or even a high resolution photo from a family vacation. You DREAM it. We MAKE it.

See pages 20 and 21 for details on selecting your custom finish.



*white marble*



*solid black*



*natural stone*



*black stone*



*distressed sky blue*



*marble hexagon tile*



*Huskies mascot*



*travertine marble*



*paradise beach*



*reclaimed wood*

## MILLIONS OF COLOR & DESIGN FINISHES FOR ONE LOW PRICE

Any of the color or design finishes you choose are offered at the same low price. No hassle, up-front pricing.



# DREAM SPA CHOOSE YOUR CUSTOM DESIGN

MILLIONS OF OPTIONS



## YOU DREAM IT. WE MAKE IT.

Color and design options for the Dream Spa are endless. The only limit is your imagination. A *high resolution image*, as defined on the following page, is all you need. You can even use a photo of your own from a family vacation or other life event!

A more traditional look is easy to achieve by selecting a marble or solid color design to blend seamlessly into any decor. The Dream Spa is available in solid white as well.

Follow our step-by-step guide on the opposite page for detailed instructions on selecting a finish. If you prefer, we may be contacted directly at (800) 732-0717 and would be happy to assist you with the selection process.

We have many examples of finishes on our website to inspire you. Visit us at [www.PennerBathing.com](http://www.PennerBathing.com).



See how to order a Dream Spa in this *Travertine Marble* finish on the next page.

OUR COLOR AND  
DESIGN APPLICATION  
PROCESS PROVIDES AN  
EXTREMELY DURABLE  
FINISH TO YOUR BATH-  
ING SPA. THIS PROCESS  
HAS BEEN APPLIED TO  
MOTOR VEHICLES FOR  
MANY YEARS. THE  
FINISH IS AMAZING  
AND REMAINS  
BEAUTIFUL EVEN IN  
HARSH ELEMENTS.  
PERFECT FOR OUR  
DREAM SPA!

## Visit a Royalty-Free Photo Website Like [www.Shutterstock.com](http://www.Shutterstock.com)

Search for a desired look such as, “Beige Marble Travertine Background”. Find a color and design you like. Click on the design for the information for the following design requirements.

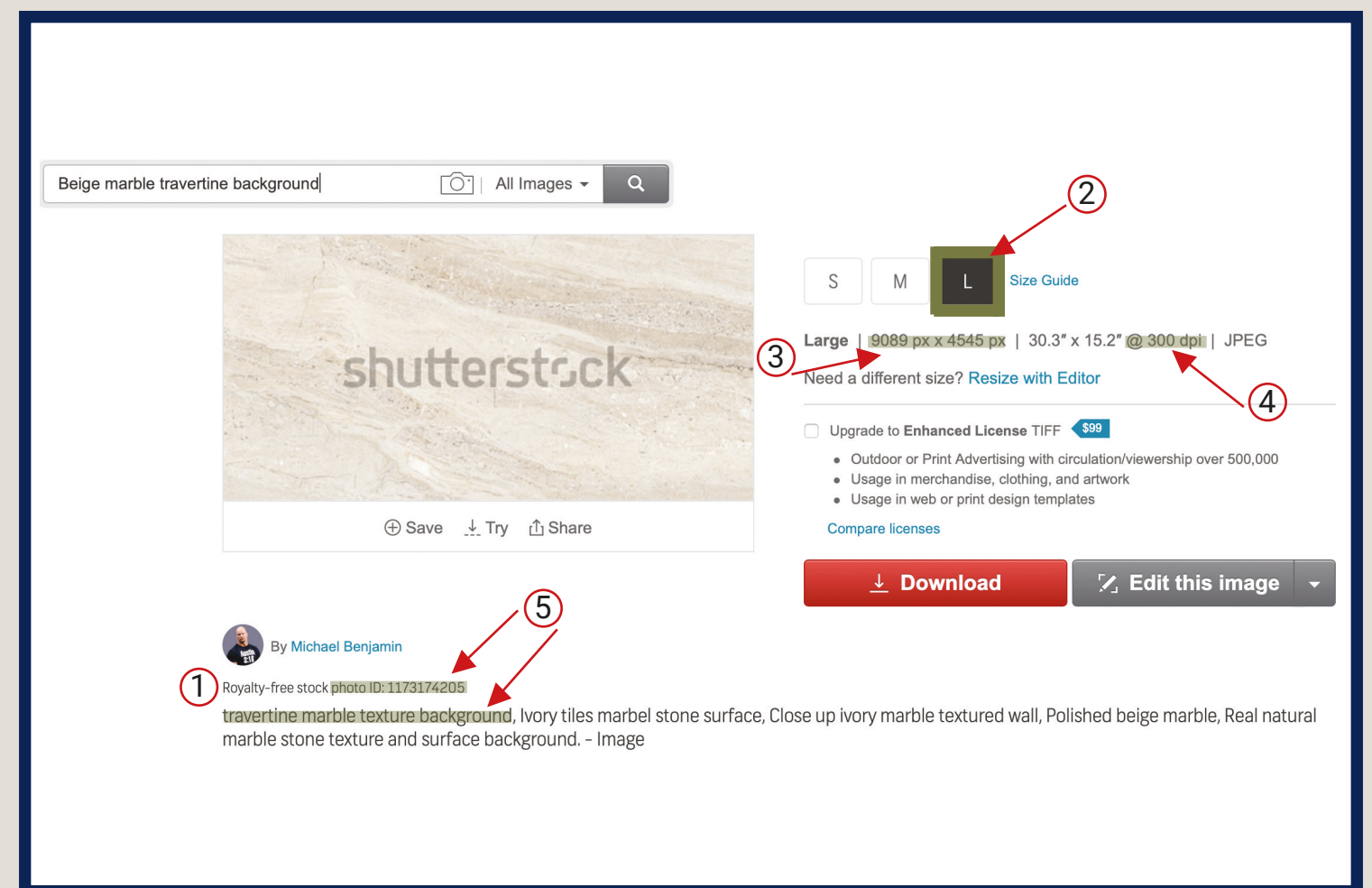
## DESIGN REQUIREMENTS

- 1 Must be NON-EDITORIAL. We cannot use copyrighted designs such as NFL or NCAA logos
- 2 Size Guide. Must Select L or XL (See below)
- 3 PX (pixels) must be at least 2000px X 2000px but can vary a little
- 4 Must be 300 dpi
- 5 Please give the Royalty Free Stock Photo ID Number and Description when placing your order with us. You do NOT need to purchase or download the design from Shutterstock. We will take care of that for you.

See the illustration below for more explanation of the Design Requirements.

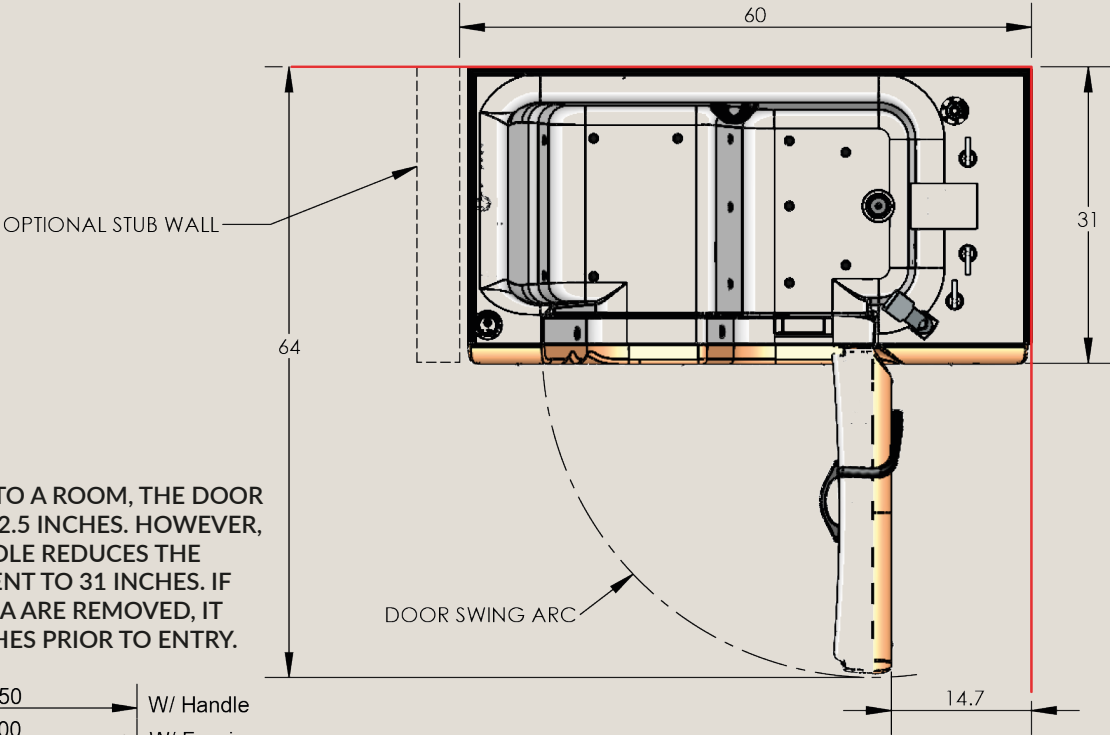
The highlighted areas are described above.

Please don't hesitate to call us if you need assistance. (800) 732-0717

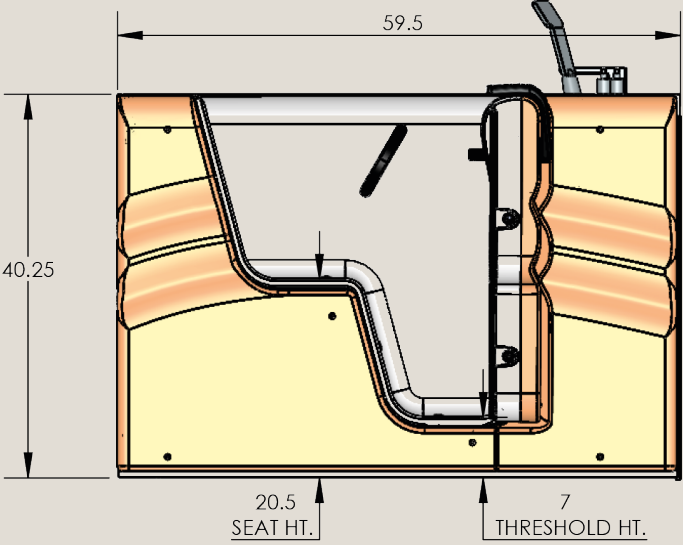
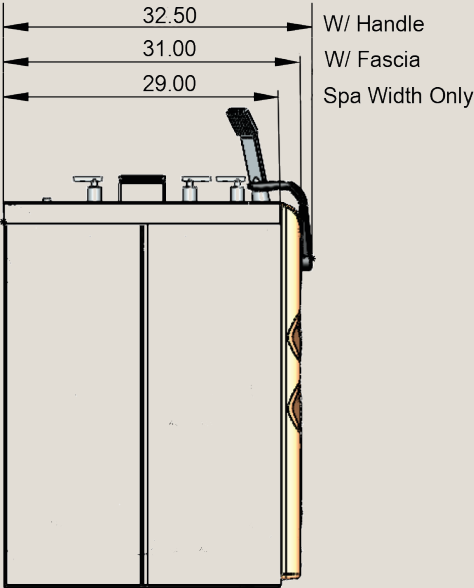




# MEASUREMENTS FOR DREAM SPA



TO TRANSPORT THIS TUB INTO A ROOM, THE DOOR OPENING WIDTH MUST BE 32.5 INCHES. HOWEVER, REMOVING THE DOOR HANDLE REDUCES THE DOOR OPENING REQUIREMENT TO 31 INCHES. IF THE WATER DOOR AND FACIA ARE REMOVED, IT CAN BE AS SMALL AS 29 INCHES PRIOR TO ENTRY.



MODEL NUMBER	760010-X	770010-X
DESCRIPTION	DREAM SPA RESIDENTIAL	DREAM SPA HEALTH CARE
WATER CAPACITY	70 GALLONS	
FILLED TUB WEIGHT	780LBS	
TUB ONLY WEIGHT	235LBS	
SHIPPING WEIGHT	350 LBS	

PENNER MFG INC.  
101 GRANT ST.  
AURORA, NE 68818  
402-694-5003

THE "X" IN THE MODEL NUMBER REPRESENTS A COLOR CODE

# ROUGH-INS FOR DREAM SPA

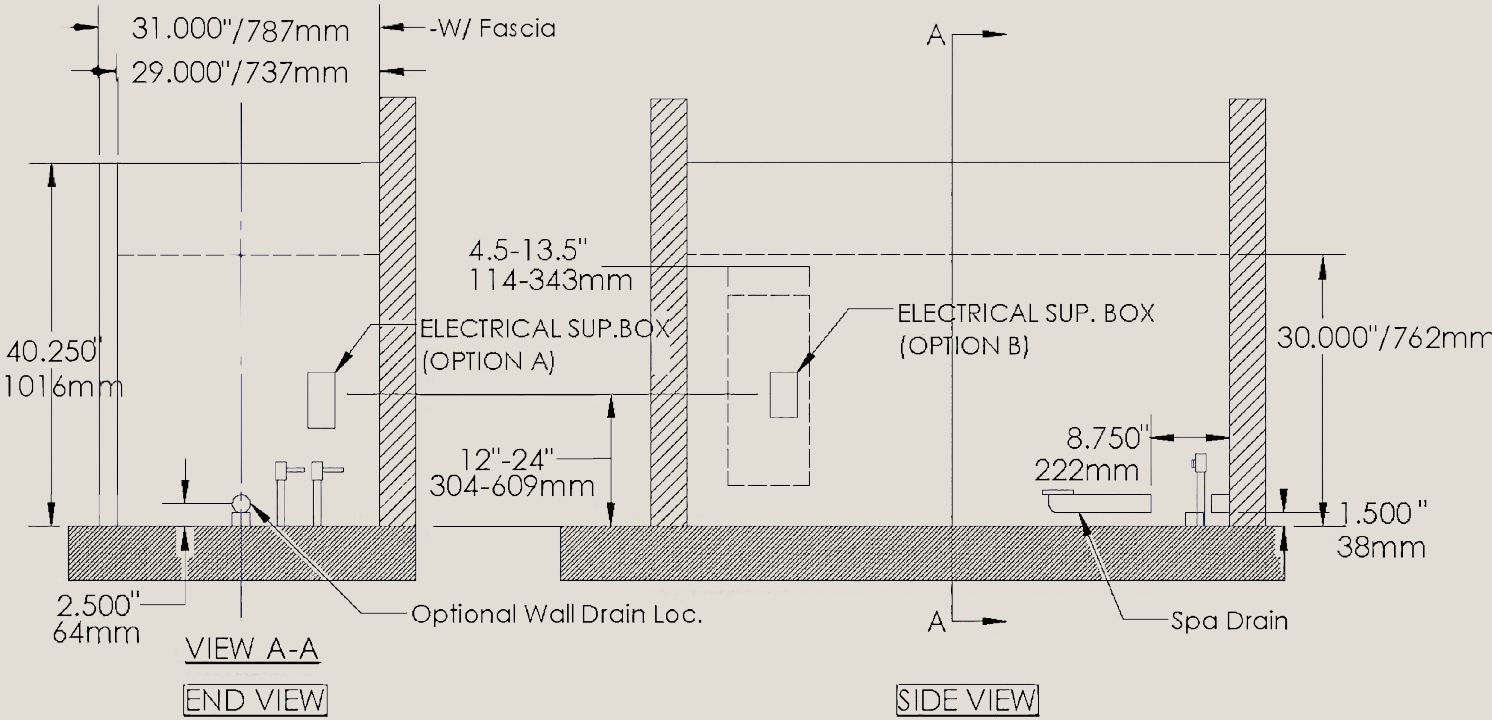
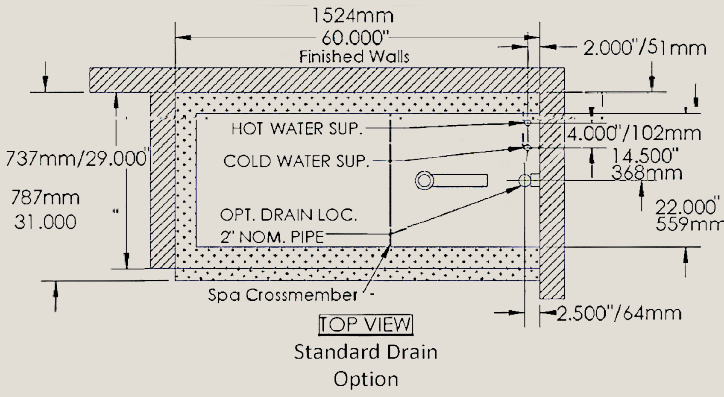
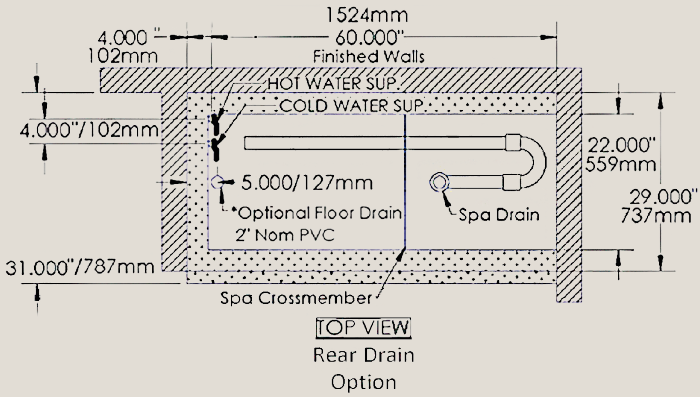
Other configurations possible. Contact Penner Manufacturing (800) 732-0717.

Water Supply: 3/4" HW & CW Supply lines preferred with ball valves with male 3/4" npt threads (not supplied). 3/4" by 72"/1829mm Braided lines are supplied.

Drain: 2" PVC pipe from floor or wall as shown below. (P-trap not included.)

Tub Electrical Rating: 120 Volts 10.5 Amps  
Recommended Electrical Supply: 15 Amp with GFCI protection

PT760010-1 Residential  
PT770010-1 Healthcare





# TheraSpa

WALK-IN BATH





# TheraSpa FEATURES

AND HOW YOU BENEFIT

## PENNAIRE MICROBUBBLES

PennAire

Experience PennAire Microbubble Technology.  
This relaxing process rids the skin pores of debris and dirt, leaving skin fresh & hydrated.

## WATERFALL FAUCET MODERN FEATURES



Every TheraSpa comes with modern features like this beautiful and relaxing waterfall faucet. It's efficient too!



### WIDE DOOR

LOTS OF ROOM TO ENTER SPA

A wide, swing-out spa door makes entering and exiting a breeze. Interior safety handles inside the door and on the opposite side of the spa provide extra stability.



### SHOWER WAND

SHAMPOO HAIR WITH EASE

The convenient hand-held shower wand gives you directional control of a gentle spray for washing hair and body or rinsing down the interior of the spa between uses.



### HEATED SEAT & AIR

STAY WARM DURING FILLING

Enjoy the warmth and relaxation of our heated seat, back and circulating air while the spa fills with water. You control the level of warmth with our simple touch pad.



### SAFE ENTRY

NO STEP-IN REQUIRED

Customer safety and comfort are always a high priority when designing our spas. Enter by sitting and then gently swinging legs and feet into the spa. No danger of stepping in and slipping on a wet interior surface.



### STANDARD TUB SPACE

NO EXTENSIVE REMODEL NEEDED

The TheraSpa is designed to fit into a standard tub space. It has a slightly smaller exterior installation dimension than our Dream Spa. You won't need an extensive and costly remodel to install a new spa.



### PENNAIRE

OXYGENATED MICROBUBBLES

Enjoy the relaxing sensation of thousands of microbubbles small enough to actually penetrate skin pores to remove and cleanse the skin of debris, dirt, and dead skin cells. Leaves your body feeling invigorated, smooth and hydrated.

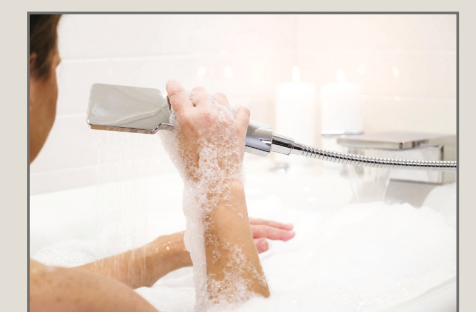
WATCH OUR SPAS IN ACTION &  
GET HELPFUL VIDEO TUTORIALS  
ON OUR YOUTUBE CHANNEL!



scan with phone camera



ALL SPAS COME WITH A  
LIFETIME LIMITED WARRANTY  
FOR ADDED PEACE OF MIND



(800) 732-0717 pennerbathing.com | 27



TheraSpa

QUICK FACTS

BY CATEGORY

DIMENSIONS & MEASUREMENTS

Spa Dimensions (with Fascia - these are the outer panels)	52”L x 32”W x 40”H Minimum
Maximum Exterior Width	32”
Interior Width	25.75”
Seat Height from Floor of Spa	20.25”
Interior Length	42.25”
Drain Diameter (needed for install or in the tub)	1.5” to 2”
Supply Lines	3/4”
Minimum Width of Room Door Opening to Get Dream Spa through Door	32”
Average Gallons of Water Used per Bath for 170 lb Person	80 Gallons
Gallons of Water to Overflow without Person in Spa	105 Gallons

WEIGHTS

Weight of Dream Spa	285 lbs
Weight of Spa w/Shipping Crate	400 lbs
Weight of Spa w/80 Gallons of Water & 180 lb person	960 lbs

TIME ESTIMATES (SOME VARIATIONS)

Duration of Heating for Seat & Back Until Automatic Shut-Off	30 Minutes
Duration of Aqua-Aire™ Blower Until Automatic Shut-Off	20 Minutes
Average Delivery Time	2 Weeks

OTHER INFORMATION

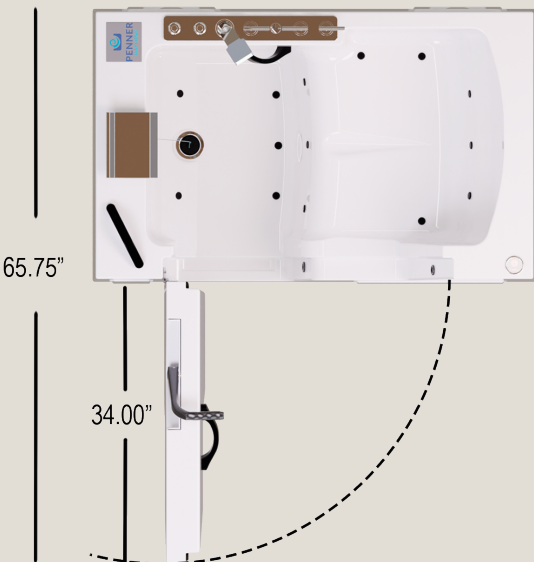
Electrical	120 Volts/10.5 Amps
Warranty Type	Lifetime Limited
Installation	Choose Your Local Contractor
Spa Color & Design Options	Millions
Dream Spa Aqua-Aire™ Blower	3-Speed Options
Water Spigot Style	Waterfall
Mixing Valve - Watts Brand Located Below Front Deck	ASSE 1070
Fill Valves - Artos Brand Individual Hot & Cold	3/4” Fitting

THERASPA IS AVAILABLE IN WHITE COLOR ONLY

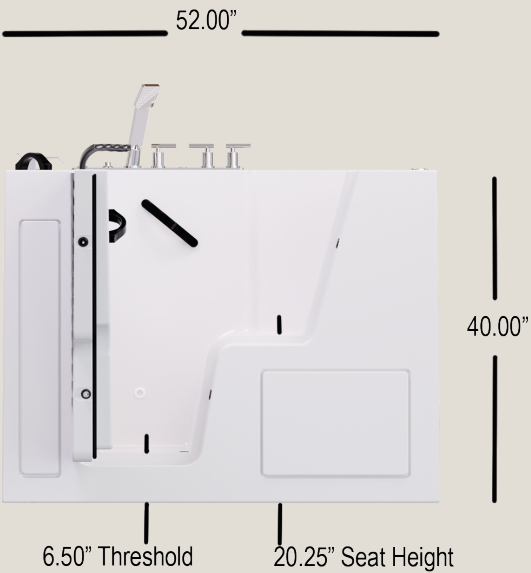
**Have questions?** Call to speak to LIVE representatives waiting to assist you. Monday-Friday, 8AM-4PM. (800) 732-0717



# MEASUREMENTS FOR THERASPA



TO TRANSPORT THIS TUB INTO A ROOM, THE DOOR OPENING WIDTH MUST BE A MINIMUM OF 32.5 INCHES.



MODEL NUMBER	860010-1	860010-1L
DESCRIPTION	Right Hand Door	Left Hand Door
WATER CAPACITY	105gal	
FILLED TUB WEIGHT	1168lbs	
TUB ONLY WEIGHT	293lbs	
SHIPPING WEIGHT	400lbs	

# ROUGH-INS FOR THERASPA

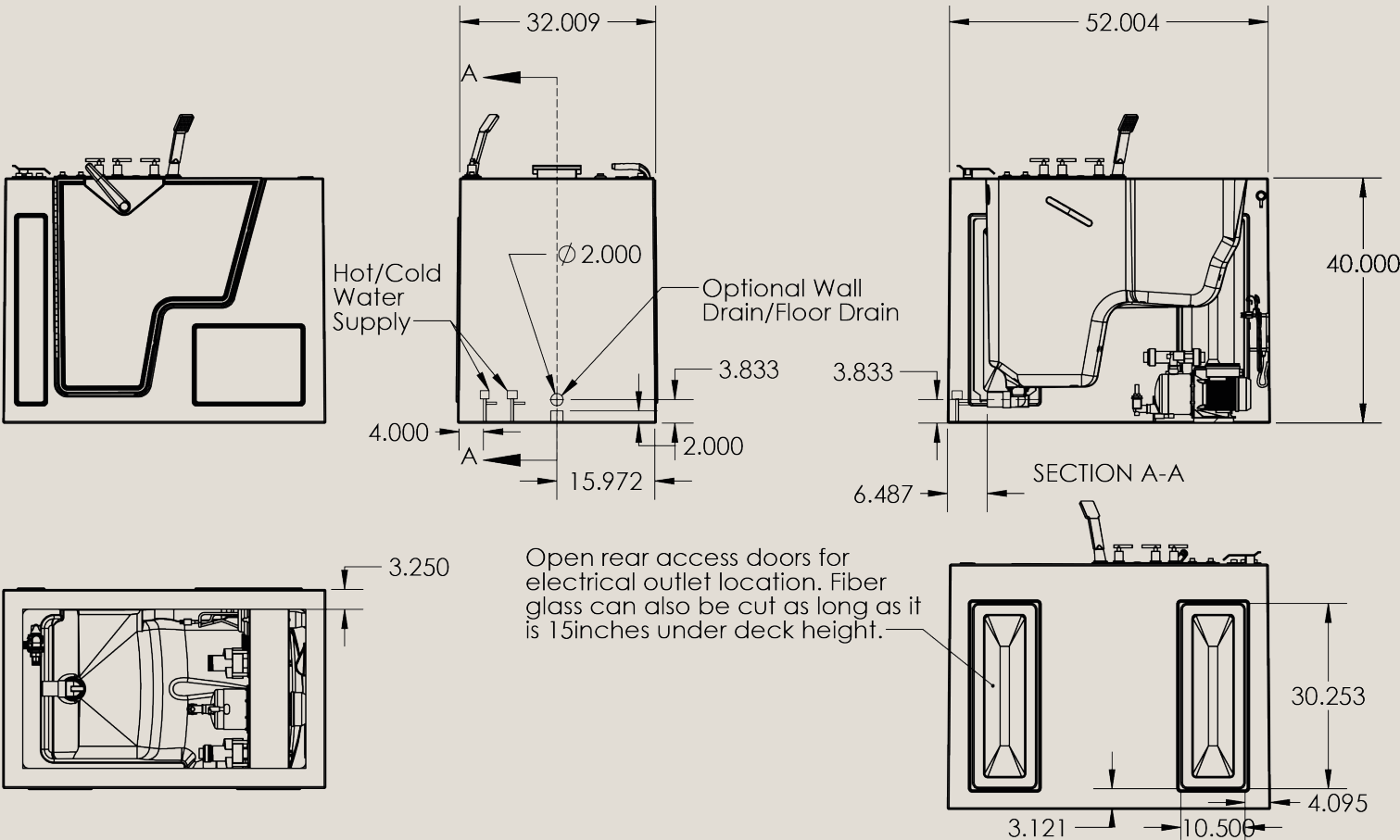
Other configurations possible. Contact Penner Manufacturing (800) 732-0717.

Water Supply: 3/4" HW & CW Supply lines preferred with ball valves with male 3/4" npt threads (not supplied). 3/4" by 72"/1829mm Braided lines are supplied.

Drain: 2" PVC pipe from floor or wall as shown below. (P-trap not included.)

Tub Electrical Rating: 120 Volts 10.5 Amps  
Recommended Electrical Supply: 15 Amp with GFCI protection

PT860010-1L Residential





# COMPARING THE DREAM SPA & THERASPA

WHICH WALK-IN BATH IS RIGHT FOR ME?



*DREAM SPA* OR TheraSpa

Penner Bathing representatives can help you decide which walk-in bath is best for you! We will assist you in assessing your bathing needs as well as the space available in your home. We offer a FREE at-home measurement and evaluation, depending on your location. We have been able to install in some homes by accessing the bathing area through a window or interior wall if halls or doorways are narrow!

Check out some comparisons on the opposite page that may help you with your decision.



*DREAM SPA*



TheraSpa

- EXTERIOR SIZE: 59.25”L x 32.5”W x 40”H
  - INTERIOR SIZE: 35”L x 21.5”W
  - COLOR: Available in millions of colors
  - DOOR: Swings open to the right
- EXTERIOR SIZE: 52”L x 32”W x 40”H
  - INTERIOR SIZE: 42.25”L x 25.75”W
  - COLOR: Available in white color only
  - DOOR: Swings open to the left

The Dream Spa and TheraSpa come standard with your choice of either the **Aqua Aire** or **PennAire** systems. You may choose to have **both** installed at additional cost. Our representatives can help you determine which system is right for you.

One of the biggest differences is the size of the spas. The exterior length of the TheraSpa is shorter than the Dream. This allows it to fit into smaller areas; however, the interior space of the TheraSpa is actually larger than the Dream.

Both spas are comfortable for a wide range of body sizes! You can sit in our spas *before you buy*. Schedule a Showroom Tour in Aurora, NE by calling 800-732-0717.

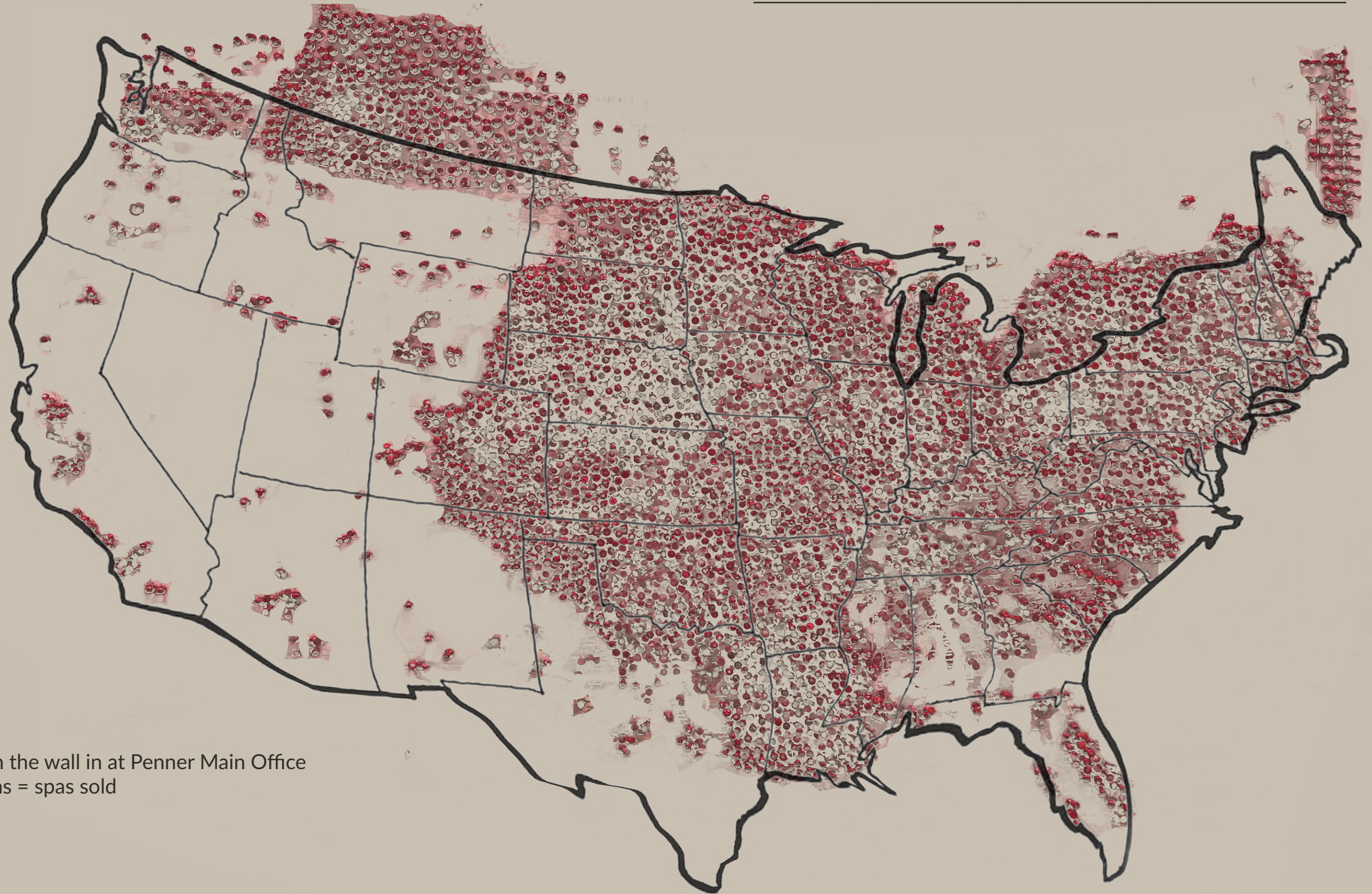




---

**PROUD TO SEE OUR SPAS IN  
FACILITIES & HOMES ACROSS  
THE UNITED STATES & CANADA**

---



Map on the wall in at Penner Main Office  
Red pins = spas sold





## *DREAM SPA* & TheraSpa Walk-in Baths

*Bathing Solutions for Every Need®*



## **VISIT OUR SHOWROOM** **101 Grant Street, Aurora, NE 68818**

Experience our walk-in baths in person or  
schedule a virtual Zoom tour.

## **CALL TODAY**

- Upfront, transparent pricing
- Factory-direct savings
- Personal service
- Available in millions of colors
- MADE IN THE USA

(800) 732-0717



**(800) 732-0717**  
[www.PennerBathing.com](http://www.PennerBathing.com)

