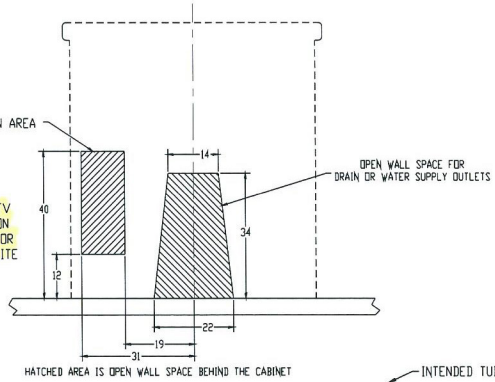


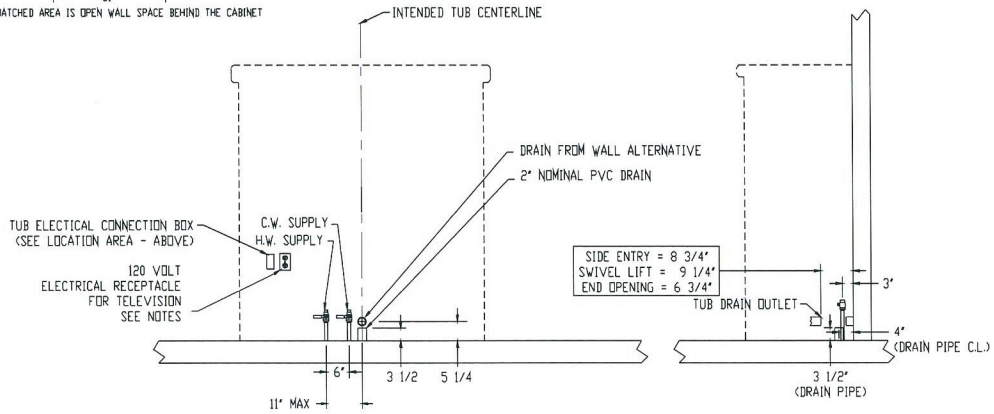
# PENNER MFG INC CASCADE - ELITE PREMIER TUB ROUGH IN SPECS

ELECTRICAL JUNCTION BOX  
AND TV RECEPTACLE LOCATION AREA

ELECTRICAL JUNCTION BOX AND TV  
RECEPTACLE LOCATION AREA IS ON  
OPPOSITE SIDE OF CENTERLINE FOR  
LEFT HAND VERSIONS OF THE ELITE  
SYSTEMS.



- WATER SUPPLY: 3/4" HW & CW SUPPLY LINES PREFERRED  
WITH BALL VALVES W/MALE NPT THREADS (NOT SUPPLIED)  
(FLEXIBLE STAINLESS STEEL BRAIDED CONNECTING LINES SUPPLIED)
- DRAIN PIPE FROM FLOOR OR OPTIONAL WALL LOCATION - 2" PVC  
(P-TRAP NOT SUPPLIED)
- TUB ELECTRICAL: TUB ELECTRICAL RATING: 120 VOLTS 9.5 AMPS  
RECOMMENDED ELECTRICAL SUPPLY: 20 AMP WITH GFCI PROTECTION  
(NUISANCE TRIPPING MAY OCCUR IF THE WIRING IS TOO TIGHT FOR THE  
DISTANCE BETWEEN THE BREAKER AND THE TUB.)
- DRAIN: T.V. ELECTRICAL: GFCI PROTECTED WALL RECEPTACLE - 120 VOLT - 15 AMP WITH GFCI PROTECTION  
(T.V. RATING IS APPROXIMATELY 2 AMPS)



RECOMMENDED LOCATIONS